



# White Mountain

---

## Road Club

# Valley of the Sun

**Stage**



**Race**

## John Earley Memorial

USA CYCLING Permit # 2010-41

Without our sponsors this race wouldn't be possible!



JORDEN BISCHOFF  
& HISER, P.L.C.



TRI-CITY CARDIOLOGY CONSULTANTS, P.C.



SHIMANO



A portion of race proceeds  
will be donated to:



## Table of Contents

3	Welcome Letter
4-5	General Information & Scoring Policies
6	GC Prize List & Stage Win Breakdown
7-9	Stage I - Trek Time Trial
10-12	Stage II – Jordan Bischoff & Hiser Road Race
13-15	Stage III - Landis Cyclery Criterium

---

### Welcome to the 18<sup>th</sup> Annual John Earley Memorial Valley of the Sun Stage Race February 12-14, 2010

Dear Race Participant,

We want to thank you for participating in this year's Valley of the Sun Stage Race. We are Arizona's largest race featuring the Lance Armstrong, Jr. Olympic Race series. Our sponsorship and venue have allowed us to have a great prize list for this year's event with \$10,000 in cash and prizes!

With the continued support of a great cycling club, sponsors and local city officials we continue to fine tune and put together a quality event that gives back to our community and cycling. This race attracts many spectators, especially at the downtown criterium. We would like to leave a LASTING POSITIVE impression on everyone attending this event. **Please be on your best behavior since you are representing our event, your team and cycling in general.**

Also this race is supported exclusively by **volunteers** so please be polite with our volunteers and don't hesitate to thank them for their assistance in making this race.

**In addition to the USA Cycling Rulebook ([www.usacycling.org/forms/USAC\\_rulebook.pdf](http://www.usacycling.org/forms/USAC_rulebook.pdf)) you are responsible for reading and following the rules set forth in this race bible.**

The following items are of particular importance:

- **Parking:** Park only where indicated
- **Portable Toilets:** Nothing will get us kicked out of a venue faster than using private property as a toilet.
- **Helmets:** Must be worn and secured at all times while on a bicycle.
- **Road Race Traffic:** On race day Hwy 187 is **ONE-WAY ONLY**

**FAILURE TO COMPLY WITH THESE REQUESTS WILL RESULT IN FINES &/OR DISQUALIFICATION**

That being said, welcome to our race and I wish you the best of luck!

Sincerely,  
White Mountain Road Club

## GENERAL INFORMATION AND SCORING POLICIES

This is a 3-day timed stage race based on cumulative time. The winner from each category will have the lowest elapsed time over the course of the 3-day race.

### REGISTRATION

PRE REGISTRATION ONLY. Online registration is at [www.BikeReg.com](http://www.BikeReg.com) we have a limit of 100 riders per category (50 for Sr Women Cat 4 and 50 for Sr Men Cat 5a & Sr Men Cat 5b) Categories fill quickly so register early

- NO REFUNDS ALLOWED ONCE REGISTRATION CLOSES
- NO rider substitutions or replacements are allowed
- Riders must register for the category listed on their USA Cycling license. Riders will not be allowed to change their category at the race
- Riders must have a 2010 USA Cycling license. ONLY Sr Men Cat 5 & Sr Women Cat 4 are eligible for one-day licenses

### SIGN-IN

Riders are **REQUIRED to sign-in before the Road Race & Criterium** (There is no sign-in required for the TT). Failure to sign-in will result in a fine of \$20.00 for the first offense, per USAC rules. Check individual stage details for sign-in locations and additional instructions.

### SCORING

Riders **MUST** complete each stage in order to start the next.

### TIME BONUSES

- **Road Race Finish:** Will have time bonuses of 10, 6 and 4 seconds for 1<sup>ST</sup>, 2<sup>ND</sup>, and 3<sup>RD</sup> finishers.
- **Road Race KING OF THE MOUNTAIN and QUEEN OF THE MOUNTAIN** On selected laps, time bonuses of 3, 2 and 1 seconds for 1<sup>st</sup>, 2<sup>nd</sup> and 3<sup>rd</sup> respectively
- **Criterium:** Will have time bonuses of 10, 6 and 4 seconds for 1<sup>ST</sup>, 2<sup>ND</sup>, and 3<sup>RD</sup> finishers.

### RESULTS

Will be posted nightly at the following locations:

- Time Trial (on the Landis Trailer next to sign-in)
- Criterium (on the Landis Trailer next to sign-in)
- Online nightly at [www.wmrc.org](http://www.wmrc.org)
- Host Hotel - Courtyard Hotel at 920 N 54<sup>th</sup> St, Chandler (I-10 & Ray Rd)
- Landis Cyclery located at 1006 East Warner Rd, Suite 106 (cross streets are Warner & Rural)
- Results will NOT be posted at the Road Race

**FINAL RESULTS** will be posted online at [www.wmrc.org](http://www.wmrc.org) and reported to USA Cycling ([www.usacycling.org](http://www.usacycling.org)) within 1 week of event completion. **THESE RESULTS ARE FINAL** See next page for protest information.

## PROTESTS

### DO NOT LEAVE UNTIL YOU HAVE REVIEWED THE FINAL POSTED RESULTS!

**Time Trial:** Protests for the TT must be made to the Chief Judge within 15 minutes of posting.

**Road Race:** Protests for the RR must be made prior to the start of the Criterium

**Criterium:** Protests for the CR must be made to the Chief Judge within 15 minutes of posting.

## CENTERLINE:

**All roads are open to traffic.** Obey and respect all police officer, official, and staff requests. **If you cross the centerline you will be disqualified!** If no painted centerline marking exists, riders must keep to the right side of the road **at all times.**

## VOLER LEADER'S JERSEY

The GC leader for every category must wear the Voler Leaders Jersey for every stage.

- **Time Trial GC** leaders will pick up their jerseys during the TT award ceremonies
- **Road Race GC** leaders will pick up their jerseys at the Crit during sign-in



If your category has multiple lead changes, you may be asked to return a clean Leader's Jersey prior to the start of the next stage.

## RACE NUMBERS

Each rider will be given two (2) bib numbers and one (1) frame number. **DO NOT CUT, FOLD, WRINKLE or ALTER NUMBERS!**

### Jersey Numbers

- All riders **MUST WEAR BOTH** bib numbers for all stages. If you do not wear both bib numbers you will be assessed a **20-second penalty!**
- Numbers must be worn on the lower part of the jersey just above the jersey pocket and along the side seam

### Frame Numbers

- Time Trial: Frame number is **NOT** required
- Road Race & Criterium: Frame number **IS** required



## JUNIOR GEAR RESTRICTION

All juniors have gear restrictions. Please refer to the USA Cycling Rulebook 1M6. All juniors must participate in rollout before and after every stage. If you miss rollout, you will be disqualified.

## COMBINED CATEGORIES

- Women Pro/I/II & Women III will race together but will be scored separately.
- Women IV & Masters Women 35+ will race together but will be scored separately.
- Under-23 riders will not be scored separately, however the top U-23 rider in Men Pro/I, Men II and Women Pro/I/II receive a cash prize.
- Men Va & Vb groups may be combined after the Time Trial **ONLY IF** there is less than 50 Sr Men Cat V riders total. Proper notice will be posted with TT results and at sign-in for the Road Race.

**PRIZES**

**Rider must be present at awards ceremony to collect prizes.** Promoter reserves the right to change the prize purse and to combine categories.

**PAST WINNERS**

	Women	Men
<b>2009</b>	Amanda Miller	Jonathan Chodroff
<b>2008</b>	Lana Atchley	Karl Bordine
<b>2007</b>	Kori Kelly-Seehafer	Matt Seagrave
<b>2006</b>	Erin Mirabella	Tom Zirbel
<b>2005</b>	Kristin Armstrong	Ryan Blickem
<b>2004</b>	Lynn Gaggioli	Mariano Friedick
<b>2003</b>	Genevieve Jeanson	Aaron Olsen
<b>2002</b>	Genevieve Jeanson	Chris Wherry
<b>2001</b>	Genevieve Jeanson	Baden Cooke
<b>2000</b>	Erin Carter	Gord Fraser

**Stage Winners Cash Prize Breakdown**

Category	TT	RR	CR
<b>Men Pro/I</b>	100	100	100
<b>Men II</b>	70	70	70
<b>Men III</b>	40	40	40
<b>Men IV</b>	35	35	35
<b>Men Masters 30+</b>	35	35	35
<b>Men Masters 40+</b>	35	35	35
<b>Men Masters 50+</b>	20	20	20
<b>Men Masters 60+</b>	-	-	-
<b>Women Pro/I/II</b>	100	100	100
<b>Women III</b>	25	25	25
<b>Women 35+</b>	-	-	-
<b>Men Va, Vb</b>	-	-	-
<b>Women IV</b>	-	-	-
<b>All Juniors</b>	-	-	-

**2010 Valley of the Sun GC Prize List**

Category	1 <sup>st</sup>	2 <sup>nd</sup>	3 <sup>rd</sup>	4 <sup>th</sup>	5 <sup>th</sup>	6 <sup>th</sup>	7 <sup>th</sup>	8 <sup>th</sup>	9 <sup>th</sup>	10 <sup>th</sup>	11 <sup>th</sup>	12 <sup>th</sup>	13 <sup>th</sup>	14 <sup>th</sup>	15 <sup>th</sup>
<b>Men Pro/I</b>	350	300	250	200	150	120	110	100	90	80	70	60	50	40	30
<b>Women Pro/I/II</b>	300	250	200	150	125	115	105	95	85	75					
<b>Men II</b>	300	250	200	150	125	115	105	95	85	75					
<b>Men III</b>	200	150	120	110	95	85	75	65	55	45					
<b>Women III</b>	70	60	50	40	30										
<b>Men IV</b>	150	130	110	90	70										
<b>Masters M 30+</b>	150	130	110	90	70										
<b>Women 35+</b>	Awards	Awards	Awards												
<b>Masters M 40+</b>	125	110	95	80	65										
<b>Masters M 50+</b>	75	50	25												
<b>Masters M 60+</b>	Awards	Awards	Awards												
<b>Espoire I M</b>	100														
<b>Espoire II M</b>	50														
<b>Espoire I/II W</b>	100														
<b>Men Va, Vb</b>	Awards	Awards	Awards												
<b>Women IV</b>	Awards	Awards	Awards												
<b>All Juniors</b>	Awards	Awards	Awards												



**Stage 1 - Trek Time Trial**  
**Buckeye AZ**  
**Friday, 12 February 2010**



**LOCATION:** The Time Trial is located on the far west side of the valley. Take I-10 West to Sun Valley Parkway Exit 109 (also marked Palo Verde). Head North on Sun Valley Parkway 1.7 miles to McDowell Rd. Please drive carefully and watch for cyclists on the roadway. **Roads are open to traffic. Obey all traffic laws.**

**PARKING** is located at McDowell Rd and is on both sides of Sun Valley Parkway. Please park perpendicular to road and off pavement. Comply with parking directors' instructions.

**COURSE DESCRIPTION:** The course is **open to traffic**. The start line is approximately 100 yards north of McDowell Rd. The course is approximately 14mi\* out and back. The roadway is divided with multiple lanes and has a good shoulder. The terrain is flat and fast and a good road surface. There will be course marshals and police at the start, finish and turnaround. \*JR's ages 12-14 will only complete 7mi

**WARM UP**

The course is closed to warm-up session after 8:00 am. We recommend warming up on a trainer if possible.

**VEHICLES**

The only vehicles permitted on the course are officials and race staff. A sweep vehicle will be on the course at all times to pickup riders.

**NEUTRAL WHEEL SUPPORT**

Is not provided during the TT and team cars are NOT permitted to follow racers.

**MECHANICALS/FLAT TIRES**

If you have a flat in the TT you can either fix the flat yourself OR you can wait for the sweep vehicle to pick you up. Do not ruin a wheel or endanger yourself or others by riding a flat. You will be given a slower time for the day and will be allowed to start the road race, if reported to and verified by an official.

**TIME TRIAL RESULTS**

Results will be posted throughout the day on the Landis Cyclery trailer. Leaders jersey awards will take place at 11am, 1pm, 3pm & after the junior results are final. **See page 5 in regards to protests.**

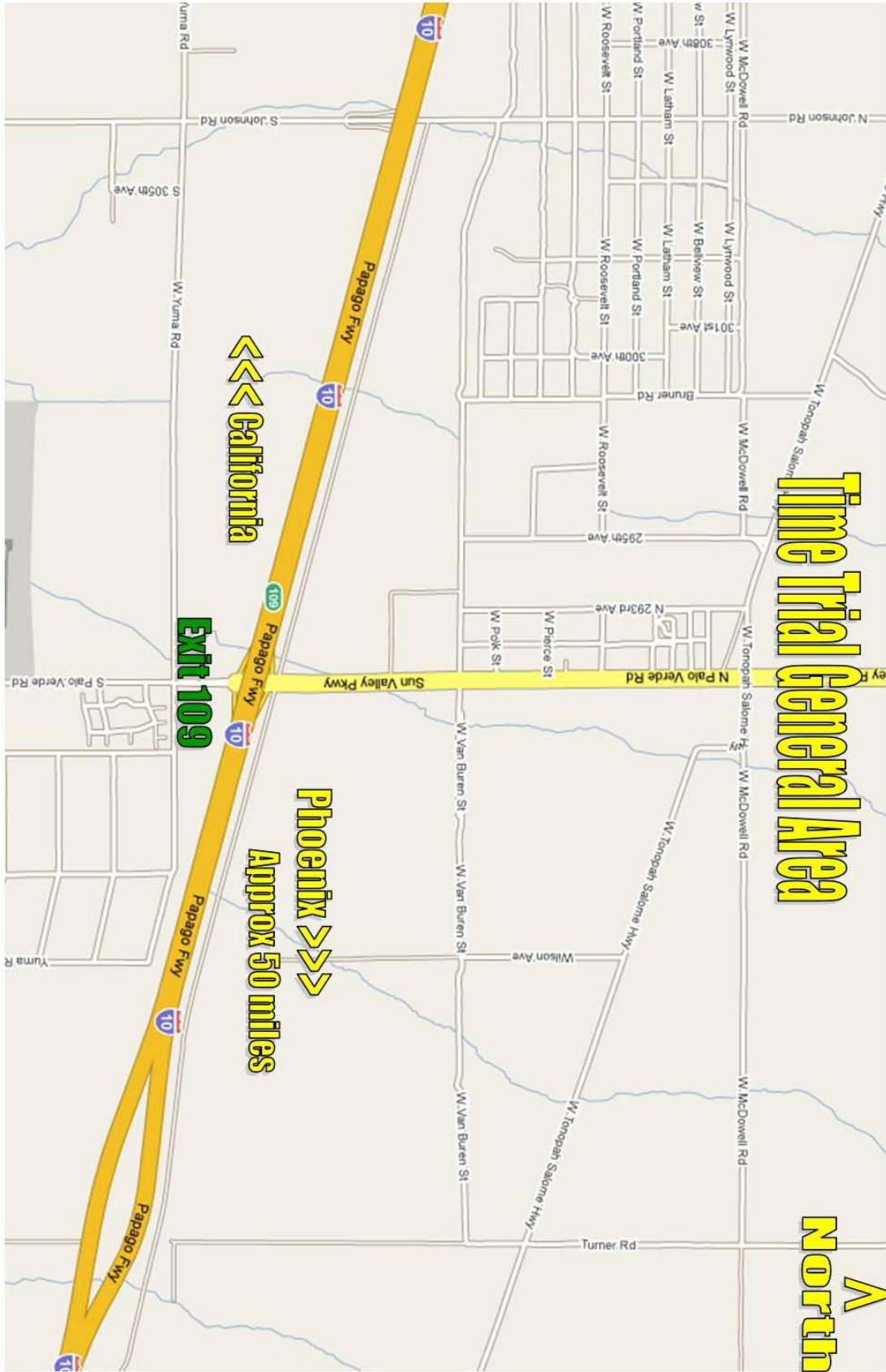
**Start times will be online & at host hotel on or before 2/11/2010**

**FIRST RIDER STARTS AT 9:00 AM**

**NO CHANGES, SUBSTITUTIONS OR RESTARTS**

Start Order
Men V
Masters Women 35+
Women IV
Masters Men 60+
Masters Men 50+
Masters Men 40+
Masters Men 30+
Men IV
Men III
Men II
Women III
Women Pro, I, II
Men Pro, I
All Juniors *

# TREK TIME TRIAL MAP





## TREK TIME TRIAL MAP

The map shows a course layout with the following features:

- Start Ramp (1):** Located on Sun Valley Pkwy, east of N Palo Verde Rd.
- Finish (2):** Located on Sun Valley Pkwy, west of N Palo Verde Rd.
- Packet Pickup / Sign-in / Awards / Vendors (3):** Located on W Tonopah Salome Hwy, east of N Palo Verde Rd.
- Portable Toilets (4):** Located on W Tonopah Salome Hwy, east of N Palo Verde Rd.
- Parking Areas:** Indicated by yellow arrows and the word "Parking" on W Tonopah Salome Hwy, both west and east of N Palo Verde Rd.
- NO PARKING Zone:** A red vertical bar on Sun Valley Pkwy, west of N Palo Verde Rd, with the text "NO PARKING on Sun Valley Pkwy — Road is open to traffic— No Warmups on course".
- Other Roads:** N 293rd Ave, W Tonopah Salome Hwy, N Palo Verde Rd, Sun Valley Pkwy, and McDowell Rd.
- Directional Indicators:** A large yellow "A" and "North" label on the right side of the map, and arrows on Sun Valley Pkwy pointing west.

1. Start Ramp: Road is open to traffic!
2. Finish: Road is open to traffic!
3. Packet Pickup / Sign-in / Awards / Vendors
4. Portable Toilets: Portable toilets will be available for your use, please use them. Nothing will get us kicked out of a venue faster than using PRIVATE property as a toilet. **Failure to comply with this request will result in disqualification!**

Stage 2 – Jordan Bischoff & Hiser Road Race  
Casa Grande AZ  
Saturday, 13 February 2010

**JORDEN BISCHOFF**  
**& HISER, P.L.C.**

#### DIRECTIONS

**ON RACE DAY HWY 187 IS ONE-WAY ONLY** (Enter from I-10) From Phoenix, take I-10 East towards Tucson. Travel approximately 20 miles to **State Route 187/387 (exit 185)**. Take exit 185 and head East (left) crossing over I-10. Follow **SR 187** northeast for about 2.2 miles past the junction for Sacaton.

#### **IMPORTANT**

We use this course courtesy of the **Gila River Indian Reservation**, the Arizona Dept of Transportation, and the Arizona Department of Public Safety.

**NO OVERNIGHT PARKING**

**NO PARKING AT FINISH**

**FEED ZONE PARKING IS BY PERMIT ONLY AND EXTREMELY LIMITED**

**NO LITTERING**

**NO PARKING** on areas outside of state road right-of-way for any reason.

All trash, water bottles, gel packets, etc **MUST** be tossed at the feed zone or at the Start line.

#### PARKING

The **ONLY** designated parking area is on the **North side of SR 187, West of the Start line** (see map on page 12). It will be marked after the junction for Sacaton. Please pull all the way off the road. NO parking within 500 meters on either side of the start line.

**FEED ZONE PARKING IS BY PERMIT ONLY AND EXTREMELY LIMITED.** Permits will be available at the RR sign-in only. If you do not have a feed zone parking permit, plan on carpooling. The feed zone is located on the north side of Highway 387 before the finish. Feeding is only allowed in the designated zone. Feeders must stay on the shoulder and feed only from the right side of the road. Please make sure you leave nothing behind.

#### COURSE DESCRIPTION

The road race course is a 16 mile course consisting of 3 straights and 3 right hand corners and 470 ft of climbing per lap. Be aware the third corner has rough road & a cattle guard just after the turn. Take this turn with extreme caution. The course is **open to traffic**. Centerline rule is in affect (see page 5) Be **cautious at the corners**. (Please view the map on page 12 for details)

## WHEEL SUPPORT

All follow vehicles will be wheels in/wheels out. This means if you flat, you only get a wheel if you put one in. Vehicles may become neutral (meaning anyone can have a wheel) if there are surplus of wheels. It is your responsibility to check with your follow vehicle before your event. If you received a spare during the race please be considerate and return it immediately following the race. **Campy or other special requirements – bring your own wheels!**

Wheel drop off - Take spare wheels to the follow vehicles at least **30 minutes before your race with the approved wheel tag. Wheel tags will be available at packet pickup and sign-in**

Post race wheel pickup – Wheels will be returned to the start area. Please **pickup your wheels immediately following your race.** Do not expect them to be transported to the crit. *The White Mountain Road Club, sponsors, officials and volunteers are not responsible for any equipment left at the race.*

**ON RACE DAY HWY 187 IS ONE-WAY ONLY** (Enter from I-10 & Exit to Hwy 87) **Racers must exit the parking area before 11:00 am or wait until the second wave races are finished at 4:00 pm. No Vehicles allowed to exit after 11:00 am. This rule is for rider safety.**

## KOM/QOM

Will be judged at the finish line. The number for the KOM/QOM relates to which time you are going to cross the finish line.

*For example; most of the morning races have 2.5 laps to complete, which means those races will cross the finish line 3 times,*

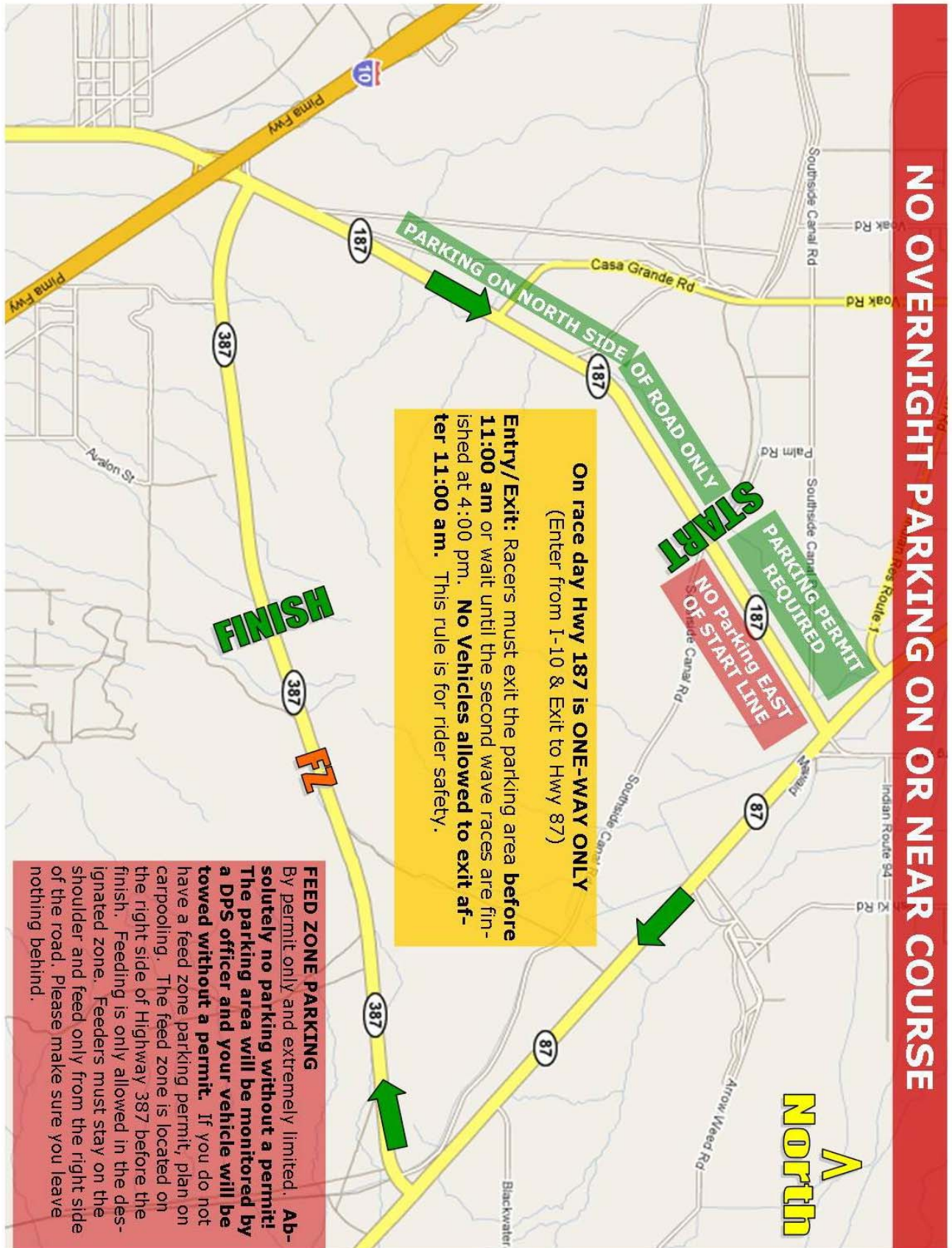
*The KOM/QOM is on lap 2 so the 2<sup>nd</sup> time you cross the line is the sprint bonus.*

## FEEDS

NO feeds are allowed on the FIRST or LAST laps of any race.

CATEGORY	START TIME	MILES	LAPS	KOM/QOM
<b>FIRST WAVE</b>				
Masters Men 40+	8:00	41	2.5	2
Men IV	8:05	41	2.5	2
Men Va	8:10	41	2.5	2
Men Vb	8:15	41	2.5	2
Masters Men 50+, 60+	8:20	41	2.5	2
Jr. Men 15-16	8:25	41	2.5	2
Women IV	8:30	41	2.5	2
Masters Women 35+				
Jr. Women 17-18	8:32	41	2.5	2
Jr. Women 15-16	8:34	25	1.5	1
Jr. Men 12-14	8:36	9	0.5	None
Jr. Women 12-14	8:38	9	0.5	None
<b>REMINDER: No Vehicles allowed to enter/exit after 11:00 am HWY 187 IS ONE-WAY ONLY (Enter from I-10 &amp; Exit to Hwy 87)</b>				
<b>SECOND WAVE</b>				
Men Pro/I	11:30	89	5.5	2 and 4
Men II	11:40	89	5.5	2 and 4
Men III	11:45	73	4.5	2 and 4
Women Pro/I/II	11:50	57	3.5	2
Women III				
Master Men 30+	11:55	57	3.5	2
Jr. Men 17-18	12:00	57	3.5	2

JORDEN BISCHOFF & HISER ROAD RACE MAP





**Stage 3 - Landis Cyclery Criterium  
Arizona State Capital  
Sunday, 14 February 2010**



**LOCATION:** Downtown Phoenix on South 17<sup>th</sup> Ave. and West Jefferson St. by the Arizona State Capitol.

**PARKING** is located west of the Capitol Building between Jefferson St. and Adams St. and 18<sup>th</sup> Ave and 19<sup>th</sup> Ave.

**TEAM PIT AREA:** Entrance is on 17<sup>th</sup> Ave in front of the Capitol between W. Adams and Jefferson Street. You must use the Vendor entrance on W. Adams St and 17<sup>th</sup> Ave.

**A Team Pit parking permit is required to access this area. Load/Unload only. Only one vehicle per team permitted.**

**COURSE DESCRIPTION:** The criterium course is a flat figure eight shaped 1.6 km (1 mile) course. It is traversed in a clockwise direction. Watch out for raised road "buttons." The finish is approximately 250 meters after the last corner.

**WHEEL PIT** is wheels in/wheels out. **Campy or other special requirements – bring your own wheels!** *The White Mountain Road Club, sponsors, officials and volunteers are not responsible for any equipment left at the race.*

**SIGN IN** at the start/finish line. You must sign in 10 minutes prior to the race start.

**FREE LAP** rule is in effect.

**LAPPED RIDERS** will be pulled, with the exception of Juniors and some smaller fields. This is at the discretion of the race officials.

**JUNIOR GEAR ROLLOUT** will be directly behind the finish line stage. Rollout immediately after the race. Do NOT leave before rolling out.

**RESULTS** will be posted near the food court.

**AWARD CEREMONIES** will be announced throughout the day. Riders must be present at ceremony to collect prizes.

**PRIMES** can be picked up near wheel pit.

## Landis Cyclery Criterium Schedule

TIME	DURATION	CATEGORY	AWARD CEREMONY
7:15a.m.	20	Jr. Men 12-14 Jr. Women 12-14 Jr. Women 15-16 Jr. Women 17-18	11 am
7:40a.m.	30	Jr. Men 17-18	
7:41a.m.	30	Jr. Men 15-16	
8:15a.m.	25	Sr. Men Va	
8:45a.m.	25	Sr. Men Vb	
9:15a.m.	25	Masters Men 50+ Masters Men 60+	1 pm
9:45a.m.	20	Masters Women 35+ Sr. Women IV	
10:10a.m.	30	Masters Men 40+	
10:40a.m.	10	Officials Break	
10:55a.m.	30	Masters Men 30+	
11:30a.m.	30	Sr. Men IV	3 pm
12:05p.m.	40	Sr. Men III	
12:50p.m.	55	Sr. Men II	After Event
1:50p.m.	40	<b>Sr. Women Pro, I, II</b> <b>Sr. Women III</b>	
2:35p.m.	30	Kids Race	"
3:15p.m.	70	<b>Sr. Men Pro, I</b>	"

### KIDS RACE/ KIDS RODEO BIKE SAFETY CLINIC

#### HELMETS ARE MANDATORY

**KIDS RACE REGISTRATION** is FREE and located at sign in. Registration opens at 12:00 and closes at 2:00pm.  
Kid's Race begins at 2:30pm

**KIDS RODEO BIKE SAFETY CLINIC** is FREE and from 11:00 – 2:00pm.

**CATEGORIES:** Children ages 3 and up will ride with kids their own age in front of the finish line stage.

#### BIKE GIVEAWAY

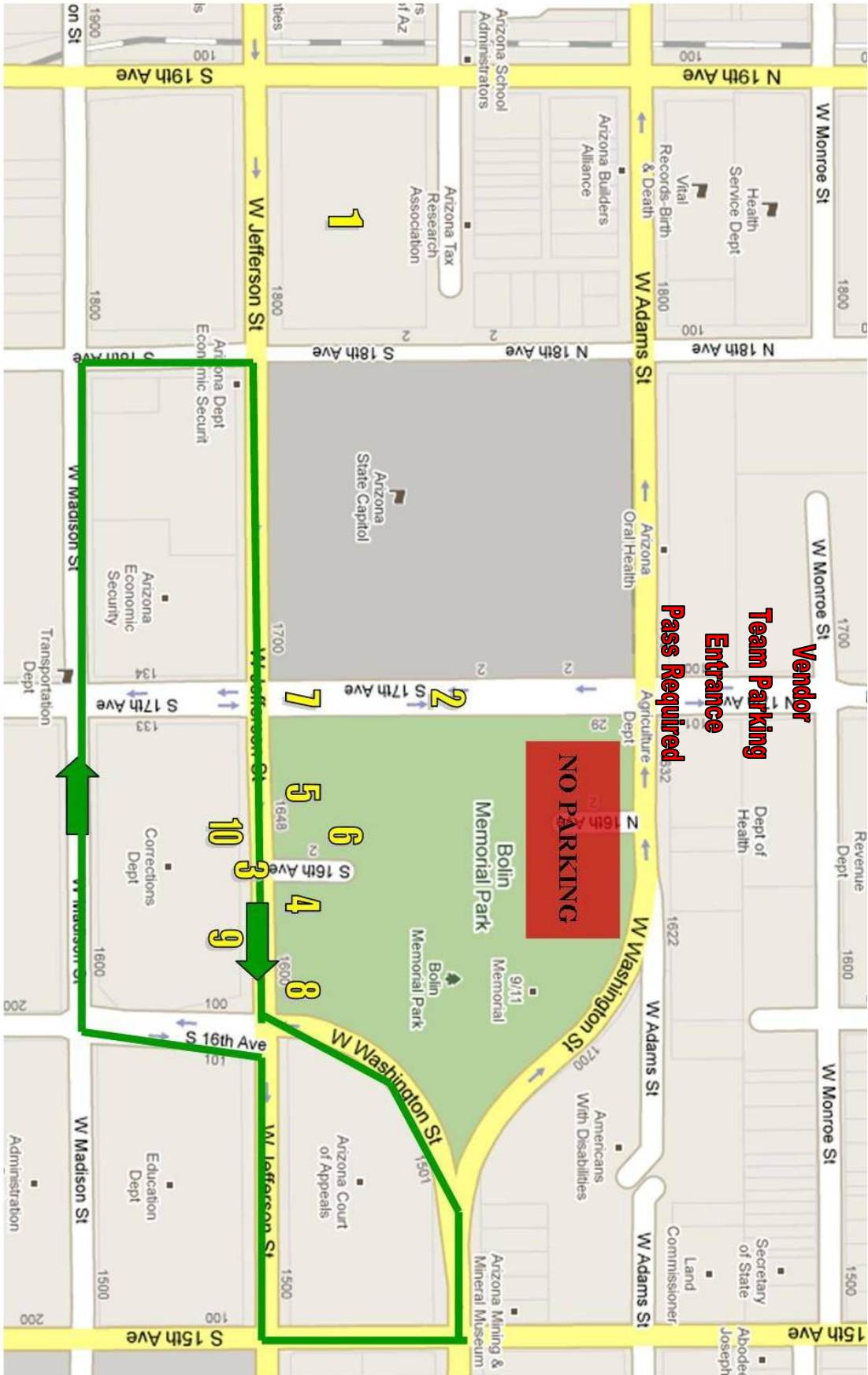
Children participating in the Kids Bike Rodeo and Bike Race will be entered in a drawing to **win a Trek kids bike!**



# LANDIS CYCLERY CRITERIUM MAP

1. Parking for all racers and spectators
2. VIP Parking
3. Start/Finish
4. Sign-in, Results & Awards
5. Team Pits

6. Kid's Rodeo
7. Food Vendors
8. Kid's Bounce House
9. Wheel Pit
10. Race Officials, Primes & Medical



**Vendor**  
**Team Parking**  
**Entrance**  
**Pass Required**

**NO PARKING**

**NORTH**