

White Mountain **Road Club**

Valley of the Sun

Stage



Race

John Earley Memorial

USA CYCLING
Permit # 2019-445



JDRS
JUNIOR DEVO RACE SERIES



Without our sponsors this race wouldn't be possible!



TREK

**JORDEN HISER
& JOY, P.L.C.**

Safeco Insurance™

Member of Liberty Mutual Group

Parrish Agency • Auto • Home



**Fueling the Recovery Journey
for Our Military Heroes
and Their Families**



FREE WHEEL FOUNDATION



TRI-CITY CARDIOLOGY CONSULTANTS, P.C.



SHIMANO®



Table of Contents

3	Welcome Letter
4-5	General Information & Scoring Policies
6	GC Prize List & Stage Win Breakdown
7-9	Stage I - Landis Cyclery - Trek Time Trial
10-13	Stage II – Safeco Insurance, Parrish Agency Road Race
14-16	Stage III – Grand Canyon University Criterium

Welcome to the 27th Annual John Earley Memorial Valley of the Sun Stage Race February 15-17, 2019

Dear Race Participant,

We want to thank you for participating in this year's Valley of the Sun Stage Race. We are Arizona's largest race featuring the USAC Road Devo Race Series for juniors. Our sponsorship and venue have allowed us to have a great prize list for this year's event with \$15,000 in cash and prizes!

With the continued support of a great cycling club, sponsors and local city officials we continue to fine tune and put together a quality event that gives back to our community and cycling. This race attracts many spectators, especially at the downtown criterium. We would like to leave a LASTING POSITIVE impression on everyone attending this event. **Please be on your best behavior since you are representing our event, your team and cycling in general.**

Also this race is supported exclusively by **volunteers** so please be polite with our volunteers and don't hesitate to thank them for their assistance in making this race.

In addition to the USA Cycling Rulebook (<http://www.usacycling.org/usa-cycling-rule-book.htm>) you are responsible for reading and following the rules set forth in this Technical Guide.

The following items are of particular importance:

- **Parking:** Park only where indicated
- **Portable Toilets:** Please use them. Absolutely NO Public urination or uncovered changing.
- **Helmets:** Must be worn and secured at all times while on a bicycle.
- **Road Race Traffic:** On race day Hwy 387 is **ONE-WAY ONLY**

FAILURE TO COMPLY WITH THESE REQUESTS WILL RESULT IN FINES &/OR DISQUALIFICATION

That being said, welcome to our race and I wish you the best of luck!

Sincerely,
White Mountain Road Club

GENERAL INFORMATION AND SCORING POLICIES

This is a 3-day timed stage race based on cumulative time. The winner from each category will have the lowest elapsed time over the course of the 3-day race.

REGISTRATION

PRE REGISTRATION ONLY. Online registration is at www.BikeReg.com we have a limit of 100 riders per category (75 for All Masters, Sr Women Cat 4/5 and Sr Men Cat 5).

- NO REFUNDS ALLOWED ONCE REGISTRATION CLOSES
- NO rider substitutions or replacements are allowed
- Riders must register for the category listed on their USA Cycling license.
Riders will not be allowed to change their category at the race
- Riders must have a current USA Cycling license.
ONLY Sr Men Cat 5, Sr Women Cat 5 & Masters are eligible for one-day beginner licenses

SIGN-IN

Riders are REQUIRED to sign-in before the Road Race & Criterium

(There is no sign-in required for the TT). Failure to sign-in will result in a fine of \$20.00 for the first offense, per USAC rules. Check individual stage details for sign-in locations and additional instructions.

SCORING

Riders MUST complete each stage in order to start the next.

TIME BONUSES

- **Road Race Finish:** Will have time bonuses of 10, 6 and 4 seconds for 1st, 2nd, and 3rd finishers.
- **Road Race King Of the Mountain and Queen Of the Mountain:** On selected laps
Time bonuses of 3, 2 and 1 seconds for 1st, 2nd and 3rd respectively
- **Criterium:** Will have time bonuses of 10, 6 and 4 seconds for 1st, 2nd, and 3rd finishers.

RESULTS

Will be posted nightly at the following locations:

- Time Trial (on the Landis Trailer next to sign-in)
There will be an awards ceremony at the TT for the top 5 finishers.
- Road Race results will **NOT** be posted at the Road Race
Posted online and at the Criterium on the Landis Trailer next to sign-in
- Criterium (on the Landis Trailer next to sign-in)
- Online nightly at www.wmrc.org (Please be patient as we are all volunteers)

FINAL RESULTS will be posted online at www.wmrc.org and reported to USA Cycling www.usacycling.org within 1 week of event completion. **THESE RESULTS ARE FINAL** See next page for protest information.

PROTESTS

DO NOT LEAVE UNTIL YOU HAVE REVIEWED THE FINAL POSTED RESULTS!

Time Trial: Protests for the TT must be made to the Chief Judge within 15 minutes of posting.

Road Race: Protests for the RR must be made to the Chief Judge prior to the start of Criterium.

Criterium: Protests for the CR must be made to the Chief Judge within 15 minutes of posting.

OFFICIALS

Chief Referee Tracy Barclay, tjbarclay@msn.com

Chief Judge – Tommey Burke, nursetommey@yahoo.com

CENTERLINE

All roads are open to traffic. Obey and respect all police officer, official, and staff requests. **If you cross the centerline you will be disqualified!** If no painted centerline marking exists, riders must keep to the right side of the road **at all times.**

VOLER LEADER'S JERSEY

The GC leader for every category must wear the Voler Leaders Jersey for every stage.

- **Time Trial GC** leaders will pick up their jerseys during the TT award ceremonies
- **Road Race GC** leaders will pick up their jerseys at the Crit during sign-in

If your category has multiple lead changes, you may be asked to return a clean Leader's Jersey prior to the start of the next stage.



RACE NUMBERS

Each rider will be given two (2) bib numbers and one (1) frame number.

DO NOT CUT, FOLD or ALTER NUMBERS!

Jersey Numbers

- All riders **MUST WEAR BOTH** bib numbers for all stages. If you do not wear both bib numbers you will be assessed a **20-second penalty!**
- Numbers must be worn on the lower part of the jersey
 - Right side: along the side seam
 - Left side on or above jersey pocket

Frame Numbers

- Time Trial: Frame number is **NOT** required
- Road Race & Criterium: Frame number **IS** required



JUNIOR GEAR RESTRICTION

All juniors have gear restrictions.

Please refer to the USA Cycling Rulebook 114 and 115 for equipment restrictions.

Rollout before the Time Trial; no rollout after the TT.

COMBINED CATEGORIES

- Women 4/5, Masters Women 35+ & 50+ will race together but will be scored separately.
- Masters Men 55+ & Masters Men 65+ will race together but will be scored separately.
- Men Cat 5 and Men Cat 5 40+ will race together but will be scored separately.
- Under-23 riders will not be scored separately, however the top U-23 rider in Men Pro/I, Men II and Women Pro 1, 2 receive a cash prize.

PRIZES

Rider must be present at awards ceremony to collect prizes.

PAST WINNERS

	Women	Men
2018	Leah Thomas	Wouter Zwart
2017	Leah Thomas	Innokenty Zavyalov
2016	Allie Dragoo	Ryan Roth
2015	Lauren Komanski	Heath Blackgrove
2014	Evelyn Stevens	Daniel Eaton
2013	Alison Tetrick	Ben Jacques-Maynes
2012	Evelyn Stevens	Luis Amaran
2011	Molly VanHouweling	Paul Thomas
2010	Carmen Small	Luis Amaran
2009	Amanda Miller	Ben Kneller
2008	Lana Atchley	Karl Bordine
2007	Kori Kelly-Seehafer	Matt Seagrave
2006	Erin Mirabella	Tom Zirbel
2005	Kristin Armstrong	Ryan Blickem
2004	Lynn Gaggioli	Mariano Friedick
2003	Genevieve Jeanson	Aaron Olsen
2002	Genevieve Jeanson	Chris Wherry
2001	Genevieve Jeanson	Baden Cooke
2000	Erin Carter	Gord Fraser

Stage Winners Cash Prize Breakdown

Category	TT	RR	CR
Men Pro 1	150	150	150
Men 2	100	100	100
Men 3	70	70	70
Men 4	50	50	50
Men Masters 35+	50	50	50
Men Masters 45+	50	50	50
Men Masters 55+	40	40	40
Men Masters 65+	-	-	-
Women Pro 1, 2	150	150	150
Women 3	40	40	40
Women 35+	-	-	-
Women 50+	-	-	-
Women 4 & 5	-	-	-
Hand Cycle	100	100	100
Men 5 & 5 40+	-	-	-
All Juniors	-	-	-
Total	2,400		

2019 Valley of the Sun GC Prize List

Category	Total	1 st	2 nd	3 rd	4 th	5 th	6 th	7 th	8 th	9 th	10	11	12	13	14	15	16 - 20
Men Pro 1	3000	450	400	350	290	230	190	150	130	110	100	90	80	70	60	50	50
Women Pro 1 2	3000	450	400	350	290	230	190	150	130	110	100	90	80	70	60	50	50
Men 2	1000	200	150	120	110	95	85	75	65	55	45						
Men 3	600	160	140	120	100	80											
Women 3	300	80	70	60	50	40											
Men 4	300	80	70	60	50	40											
Masters M 35	600	160	140	120	100	80											
Masters M 45	600	160	140	120	100	80											
Masters M 55	300	80	70	60	50	40											
Masters M 65	Awards	Awards	Awards	Awards													
Hand Cycle	1000	200	150	120	110	95	85	75	65	55	45						
Espoire 1 M	150	150															
Espoire 2 M	50	50															
Espoire 1, 2 W	100	100															
Men 5 & 5 40+	Awards	Awards	Awards	Awards													
Women 4 & 5	Awards	Awards	Awards	Awards													
Women 35+	Awards	Awards	Awards	Awards													
Women 50+	Awards	Awards	Awards	Awards													
All Juniors	Awards	Awards	Awards	Awards													
Total	11,000																

Promoter reserves the right to change the prize purse and to combine categories.

- Minimum number of Men Pro 1 = 60, Men 2 and Women Pro 1, 2 = 40

Rider must be present at awards ceremony to collect prizes.

Stage 1 –Landis Cyclery, Trek Time Trial
Buckeye AZ
Friday, 15 February 2019



TREK

LOCATION: The Time Trial is located on the far west side of the valley.

1615 West Sun Valley Pkwy, Buckeye, AZ 85396

Take I-10 West to Sun Valley Parkway Exit 109 (also marked Palo Verde).

Head North on Sun Valley Parkway 1.7 miles to McDowell Rd.

Please drive carefully and watch for cyclists on the roadway.

Roads are open to traffic. Obey all traffic laws.

PARKING is located at McDowell Rd and is on both sides of Sun Valley Parkway. Please park perpendicular to road and off pavement. Comply with parking directors' instructions.

COURSE DESCRIPTION: The course is **open to traffic**. The start line is approximately 100 yards north of McDowell Rd. The course is approximately 14 mile out and back. The roadway is divided with multiple lanes and has a good shoulder. The terrain is flat and fast and a good road surface. There will be course marshals and police at the start, finish and turnaround.

* **Hand Cycle** will complete a 9.8 mile course.

****JR's ages 9 - 14** will complete a 6 mile course.

WARM UP

The course is closed to warm-up session after 8:00 am. We recommend warming up on a trainer if possible.

VEHICLES

The only vehicles permitted on the course are officials and race staff. A sweep vehicle will be on the course at all times to pick up riders.

NEUTRAL WHEEL SUPPORT

Is not provided during the TT and team cars are NOT permitted to follow racers.

MECHANICALS/FLAT TIRES

If you have a flat in the TT you can either fix the flat yourself OR you can wait for the sweep vehicle to pick you up. Do not ruin a wheel or endanger yourself or others by riding a flat. After verification by an official (blue shirt), the rider will be awarded the same time as the slowest same category racer completing the course and may start the road race stage.

TIME TRIAL RESULTS

Results will be posted throughout the day on the Landis Cyclery trailer. Leader's jersey awards will take place at 12am, 2pm, 4pm & after all junior results are final. **See page 5 in regards to protests.**

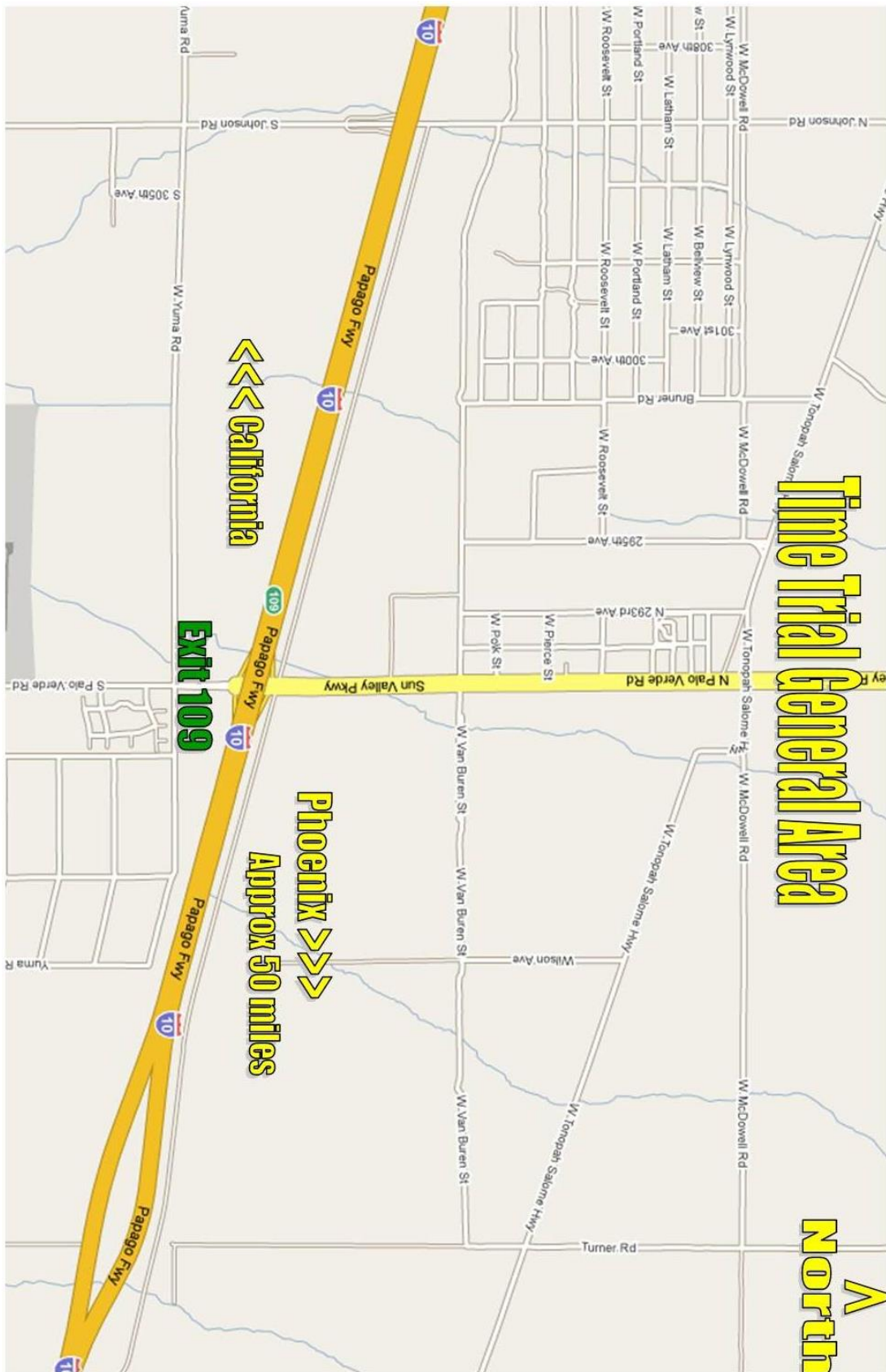
Start times will be online & at Landis Cyclery on or before 2/14/2018

FIRST RIDER STARTS AT 9:00 AM

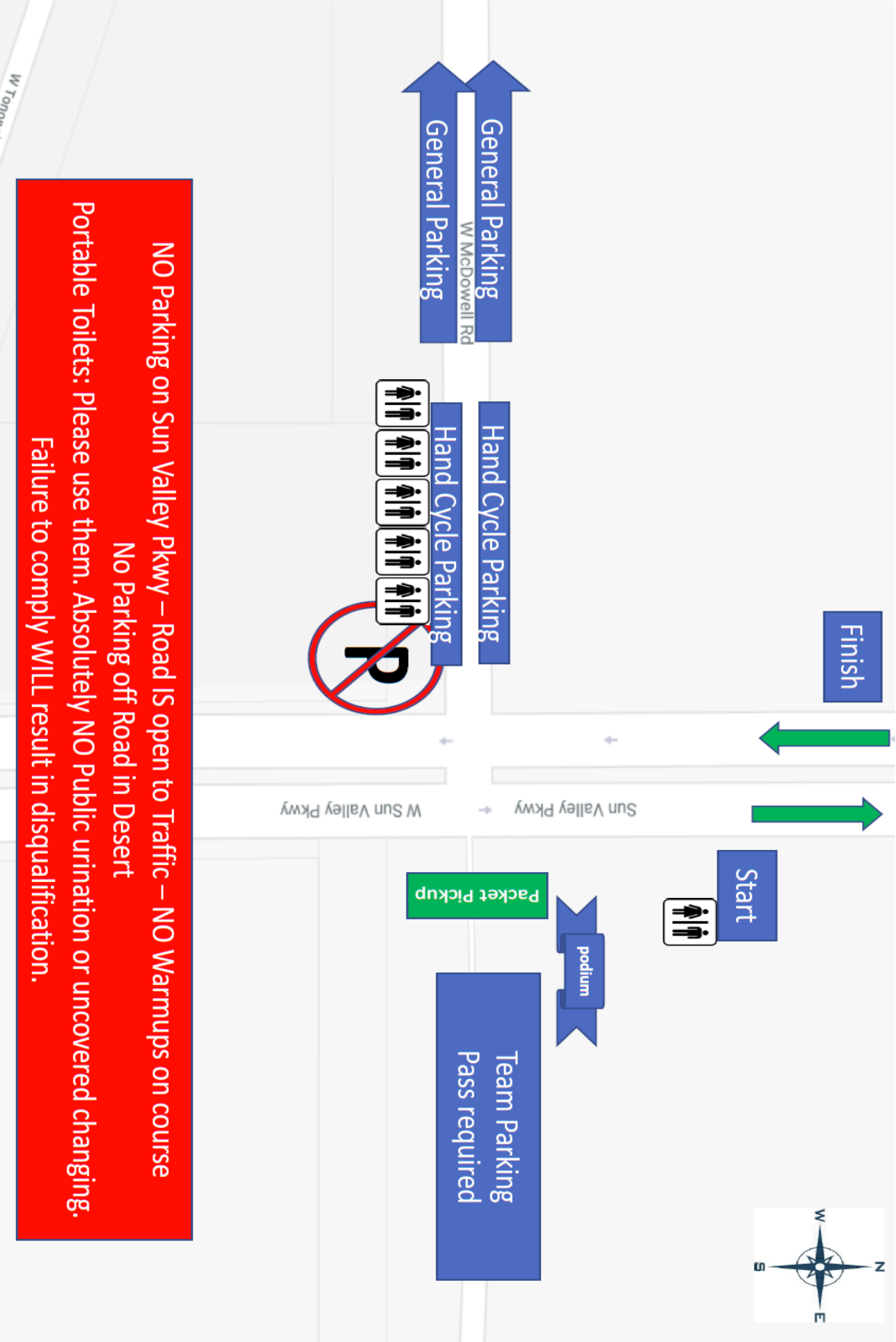
NO CHANGES, SUBSTITUTIONS OR RESTARTS

Start Order
Men 5
Men 5 40+
Masters Women 35+
Masters Women 50+
Women 5
Women 4
Masters Men 65+
Masters Men 55+
Masters Men 45+
Masters Men 35+
Men 4
Men 3
Men 2
Women 3
Women Pro, 1, 2
Men Pro, 1
Juniors 17 – 18
Juniors 15 – 16
Hand Cycle *
Juniors 9 – 14 **

Landis Cyclery - Trek Time Trial MAP



Landis Cyclery - Trek Time Trial MAP



Stage 2 – Safeco Insurance, Parrish Agency
Road Race
Casa Grande AZ
Saturday, 16 February 2019



DIRECTIONS

ON RACE DAY HWY 387 IS ONE-WAY ONLY

AZ-387, Casa Grande, AZ 85194

(Enter from I-10) From Phoenix, take I-10 East towards Tucson.

Travel approximately 20 miles to **State Route 187/387 (exit 185)**. Take exit 185 and head East (left) crossing over I-10. Turn right on **SR 387** southeast for about 1 mile to parking/start.

See Map on pages 12 and 13.

Parrish Agency • Auto • Home

IMPORTANT

We use this course courtesy of the **Gila River Indian Reservation**, the Arizona Dept of Transportation, and the Arizona Department of Public Safety.

NO OVERNIGHT PARKING

NO PARKING AT FINISH

FEED ZONE PARKING IS BY PERMIT ONLY AND EXTREMELY LIMITED

NO LITTERING

NO PARKING on areas outside of state road right-of-way for any reason.

All trash, water bottles, gel packets, etc **MUST** be tossed at the feed zone or at the Start line.

PARKING

The **ONLY** designated parking area is on the **South side of SR 387** (see map on page 12 and 13 for details). Please follow the parking directions of the volunteer.

Park on the shoulder all the way off the road. **NO parking within 200 meters of the start line.**

FEED ZONE PARKING IS BY PERMIT ONLY AND EXTREMELY LIMITED. Permits will be available at the **RR sign-in only**. If you do not have a feed zone parking permit, plan on carpooling with someone that does. The feed zone is located on the north side of Highway 387 before the finish. Feeding is only allowed in the designated zone. Feeders must stay on the shoulder and feed only from the right side of the road. Please make sure you clean up your trash/empty bottles and leave nothing behind.

COURSE DESCRIPTION

The road race course is a 16 mile course consisting of 3 straights and 3 right hand corners and 470 ft of climbing per lap. The course is **open to traffic**. Centerline rule is in affect (see page 5) Be **cautious at the corners**. (Please view the map on page 12 for details)

VEHICLES ON COURSE

The course is **open to traffic**. All racers and groups of racers must **NEUTRALIZE** when approaching any vehicles especially medical vehicles on the course.

COURSE HAZARDS / NEUTRAL START

There is a cattle guard immediately after the corner #1 and rumble strips on Hwy 87.

The start will be neutral on the first lap until groups pass the cattle guard after the first right hand turn.

JUNIOR/MINOR MEDICAL

Minor racers must have a parent, guardian, or a coach present to refuse EMT treatment to a minor.

WHEEL SUPPORT

All follow vehicles will be wheels in/wheels out. This means if you flat, you only get a wheel if you put one in. Vehicles may become neutral (meaning anyone can have a wheel) if there are surplus of wheels. It is your responsibility to check with your follow vehicle before your event. If you received a spare during the race please be considerate and return it immediately following the race.

Campy or other special requirements – bring your own wheels!

Wheel drop off - Take spare wheels to the follow vehicles at least **30 minutes before your race with the approved wheel tag. Wheel tags will be available at packet pickup and sign-in**

Post race wheel pickup – Wheels will be returned to the start area. Please **pickup your wheels immediately following your race.** Do not expect them to be transported to the crit. *The White Mountain Road Club, sponsors, officials and volunteers are not responsible for any equipment left at the race.*

ON RACE DAY HWY 387 IS ONE-WAY ONLY FROM WEST TO EAST

(Enter from I-10 & Exit to Hwy 87)
Racers must exit the parking area traveling from west to east before 11:00 am or wait until the second wave races are finished at 4:00 pm. No Vehicles allowed to exit after 11:00 am. This rule is for rider safety.

KOM/QOM

Will be judged at the finish line. The number for the KOM/QOM relates to which time you are going to cross the finish line.

For example; most of the morning races have 2.8 laps to complete, which means those races will cross the finish line 3 times,

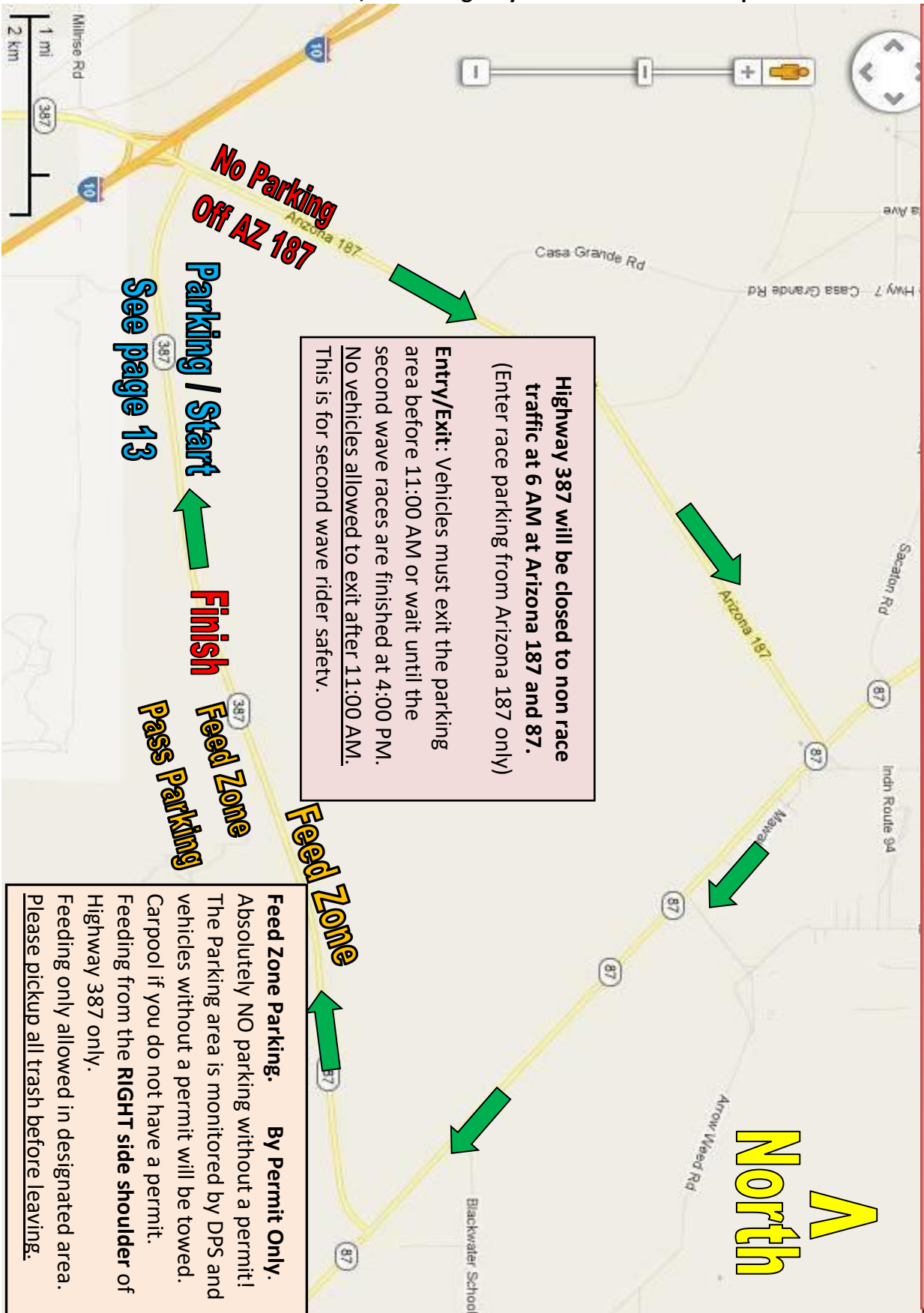
The KOM/QOM is on lap 2 so the 2nd time you cross the line is the sprint bonus.

FEEDS

NO feeds are allowed on the FIRST or LAST laps of any race.

CATEGORY	START TIME	MILES	LAPS	KOM/QOM
FIRST WAVE				
Masters Men 35+	8:00	62	3.8	2
Men 4	8:04	46	2.8	2
Men 5	8:07	46	2.8	2
Men 5 40+				
Masters Men 55+, 65+	8:11	46	2.8	2
Jr. Men 15-16	8:15	46	2.8	2
Women 5	8:18	46	2.8	2
Women 4				
Masters Women 35+				
Masters Women 50+				
Hand Cycle	8:22	30	1.8	1
Jr. Women 17-18	8:24	30	1.8	1
Jr. Women 15-16	8:24	30	1.8	1
Jr. Men 13-14	8:26	14	0.8	None
Jr. Women 13-14	8:26	14	0.8	None
REMINDER: No Vehicles allowed to enter/exit after 11:00 am HWY 387 IS ONE-WAY ONLY FROM WEST TO EAST (Enter from I-10 & Exit to Hwy 87)				
SECOND WAVE				
Men Pro 1	11:30	94	5.8	2 and 4
Men 2	11:35	94	5.8	2 and 4
Men 3	11:40	78	4.8	2 and 4
Jr. Men 17-18	11:50	62	3.8	2
Masters Men 45+	11:55	62	3.8	2
Women Pro 1, 2	12:00	62	3.8	2
Women 3	12:02	62	3.8	2

ABSOLUTLY NO PARKING OFF OF ROAD OR UNASSIGNED AREA!





ABSOLUTLY NO PARKING OFF OF ROAD OR UNASSIGNED AREA!

Stage 3 Jorden Hiser & Joy Criterium
Arizona State Capitol
Sunday, 17 February 2019

JORDEN HISER & JOY, P.L.C.

LOCATION: Downtown Phoenix on South 17th Ave.
and West Jefferson St. by the Arizona State Capitol.
1645 W Jefferson St, Phoenix, AZ 85007

PARKING AREA is located west of the Capitol Building between Jefferson St. and Adams St. and 18th Ave and 19th Ave.

TEAM PARKING AREA: Entrance is on 17th Ave from the south of the course. From W. Grant Street and 17th Ave. travel north on 17th Ave to W. Madison Street. Follow parking volunteer directions to cross the course on W. Madison and 17th Ave to team parking lot.

A Team Pit parking permit is required to access this area. Only one vehicle per team permitted.

COURSE DESCRIPTION: The criterium course is a flat figure eight shaped 1.6 km (1 mile) course. It is traversed in a clockwise direction. Watch out for raised road “buttons.” The finish is approximately 250 meters after the last corner.

WHEEL PIT is wheels in/wheels out. **Campy or other special requirements – bring your own wheels!**
The White Mountain Road Club, sponsors, officials and volunteers are not responsible for any equipment left at the race.

SIGN IN at the start/finish line. You must sign in 10 minutes prior to the race start.

FREE LAP rule is in effect until three laps to go. Riders with legitimate incident and unable to return within Free Laps will be placed at the end of the field they were with and same time.

LAPPED RIDERS will be pulled, with the exception of Juniors and some smaller fields. This is at the discretion of the race officials.

JUNIOR GEAR ROLLOUT will be on 17th Ave. just north of W Jefferson at location label 8 on the map. Rollout before and immediately after the race. Do NOT leave before rolling out.

RESULTS will be posted near the sign in area.

AWARD CEREMONIES will be announced throughout the day. Riders must be present at ceremony to collect prizes.

PRIMES can be picked up near wheel pit.

Jorden Hiser & Joy Criterium Criterium Schedule

TIME	DURATION	CATEGORY	AWARD CEREMONY
7:15a.m.	30	Sr. Men 5 Sr. Men 5 40+	11:30 am
7:50 a.m.	25	Jr. Men 9-12 Jr. Men 13-14 Jr. Women 9-12 Jr. Women 13-14 Jr. Women 15-16 Jr. Women 17-18	
8:20 a.m.	30	Jr. Men 15-16	
8:55 a.m.	45	Jr. Men 17-18	
9:45 a.m.	25	Sr. Women 5 Sr. Women 4 Masters Women 35+ Masters Women 50+	
10:15 a.m.	30	Masters Men 55+ Masters Men 65+	1 pm
10:45 a.m.	10	Officials Break	
10:55 a.m.	30	Masters Men 45+	
11:30 a.m.	30	Masters Men 35+	3 pm
12:05 p.m.	30	Sr. Men 4	
12:40 p.m.	40	Sr. Men 3	
1:25 p.m.	40	Sr. Women Pro, 1, 2	
2:10 p.m.	25	Kids Race	After Event
2:35 p.m.	30	Hand Cycle	
3:10 p.m.	60	Sr. Men Pro, 1	
4:15 p.m.	45	Sr. Men 2	
5:05 p.m.	30	Sr. Women 3	

KIDS BIKE RACE

- **HELMETS ARE MANDATORY**
- **KIDS RACE REGISTRATION** is FREE and located at sign in. Registration opens at 11:00 and closes at 2:00pm. Kid's Race begins at 2:10pm
- **CATEGORIES:** Children ages 3 and up will ride with kids their own age in front of the finish line stage.
- **BIKE GIVEAWAY**
Children participating in the Kids Bike Race will be entered in a drawing to **win a Trek kids bike from Landis Cyclery!**

Jorden Hiser & Joy Criterium Map

